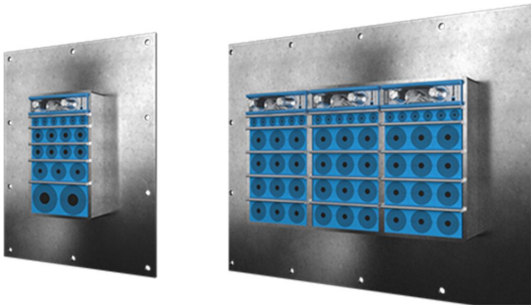


# Roxtec GH FL100 transit

Transit with wide flange, for bolting onto uneven structures.

The Roxtec GH FL100 is a cable and pipe seal that allows for high packing density. The transit ensures a tight seal when bolted onto concrete or brick walls/floors. The rectangular steel frame has a 100mm wide flange to make it possible to place the bolting holes further from the opening in the wall to avoid the risk of cracks. The transit can be used with a GE extension frame in galvanized steel to cover the depth of a thick wall.



- ☒ Rodent resistant
- ☒ Area efficient
- ☒ Easy to maintain and inspect

### Product characteristics



Fire rated



IP/UL NEMA

### Structure of installation



Concrete



Brick

### Mounting type



Bolting

## Ratings & certificates

### Fire

- ☒ E/EI rating according to EN 13501
- ☒ F/T rating according to UL 1479

### Tightness

- ☒ IP 66/67

## Frame dimensions

### in/lbs

The frame variants below are a limited selection. For the full range of frames and configurations, please visit [roxtec.com](https://www.roxtec.com).

Product	Frame openings	Packing space	External dimensions WxHxD	Aperture dimensions w x h	Weight	Art. no
GH 6x1 FL100 GALV	1	4.724 x 7.087	13.091 x 16.929 x 2.362	5.827(+0.197/-0.197) x 9.646(+0.197/-0.197)	17.2	122158
GH 6x2 FL100 GALV	2	4.724 x 7.087	18.228 x 16.929 x 2.362	10.945(+0.197/-0.197) x 9.646(+0.197/-0.197)	24.3	122159
GH 6x3 FL100 GALV	3	4.724 x 7.087	23.366 x 16.929 x 2.362	16.102(+0.197/-0.197) x 9.646(+0.197/-0.197)	30.5	122160
GH 6x1 FL100 AISI316	1	4.724 x 7.087	13.091 x 16.929 x 2.362	5.827(+0.197/-0.197) x 9.646(+0.197/-0.197)	16.3	105508
GH 6x2 FL100 AISI316	2	4.724 x 7.087	18.228 x 16.929 x 2.362	10.945(+0.197/-0.197) x 9.646(+0.197/-0.197)	23.1	120984
GH 6x3 FL100 AISI316	3	4.724 x 7.087	23.366 x 16.929 x 2.362	16.102(+0.197/-0.197) x 9.646(+0.197/-0.197)	28.7	105509

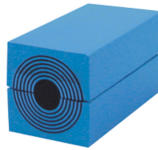


# Sealing components

## Sealing components



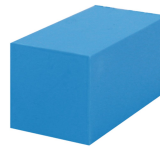
Lubricant



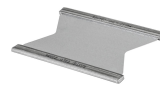
RM module with  
Multidiameter™



Wedge & Wedgekit



RM solid compensation  
module



Stayplate



GE extension frame



Holder tools



Sealing kit

## Accessories

For detailed information, please visit [roxtec.com](https://www.roxtec.com).

The product information provided by Roxtec does not release the purchaser of the Roxtec system, or part thereof, from the obligation to independently determine the suitability of the products for the intended process, installation and/or use.

Roxtec gives no guarantee for the Roxtec system or any part thereof and assumes no liability for any loss or damage whatsoever, whether direct, indirect, consequential, loss of profit or otherwise, occurred or caused by the Roxtec systems or installations containing components not manufactured by an authorized manufacturer and/or occurred or caused by the use of the Roxtec system in a manner or for an application other than for which the Roxtec system was designed or intended.

Roxtec expressly excludes any implied warranties of merchantability and fitness for a particular purpose and all other express or implied representations and warranties provided by statute or common law. User determines suitability of the Roxtec system for intended use and assumes all risk and liability in connection therewith. In no event shall Roxtec be liable for indirect, consequential, punitive, special, exemplary or incidental damages or losses.

The Roxtec products are offered and sold in accordance with the conditions of the Roxtec General Terms of Sales. The latest version of the Roxtec General Terms of Sales can be downloaded from <https://www.roxtec.com/en/about-us/about-roxtec/general-terms-of-sales/>

We reserve the right to make changes to the product and technical information without further notice. Any errors in print or entry are no claims for indemnity. The content of this publication is the property of Roxtec International AB and is protected by copyright.

This document was generated on: 2024-04-29